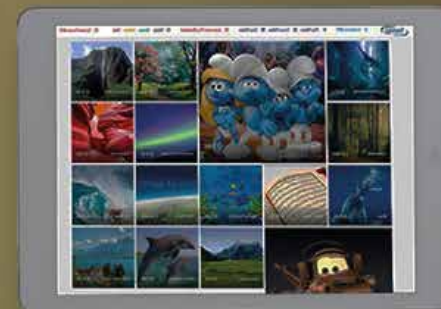




www.troymed.com

MRI AMBIANCE SYSTEMS



RGB LED Light

The ambiance software runs spatial algorithm which allows real time analysis of the video on the screen, finds main RGB color code and stream it to the RGB LED light.

MRI Compatible LED Monitor

32" or 55" (optional)
1920 x 1080 (16:9)
Full HD
Fiber optic connection
Compatible with fMRI examinations

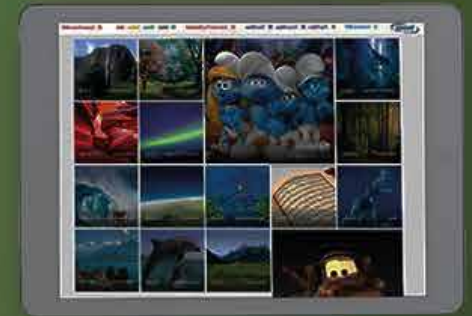
MRI Compatible Projector

1920x1080 Full HD
Brightness (Lumens): 5000
Color Contrast: 30,000:1
Display Size (in.): 30 - 300 in.
Fiber optic connection
Integrated Speakers: 40 W

MRI Skin Projection



MRI In - Bore Movie Experience



MRI Entertainment Software

Real time media integration playback

Over 250 animations, videos and images to choose.

Run LED monitor, projector, room ambient sound, headset sound and LED lights dynamically by the click of the button of touch screen.

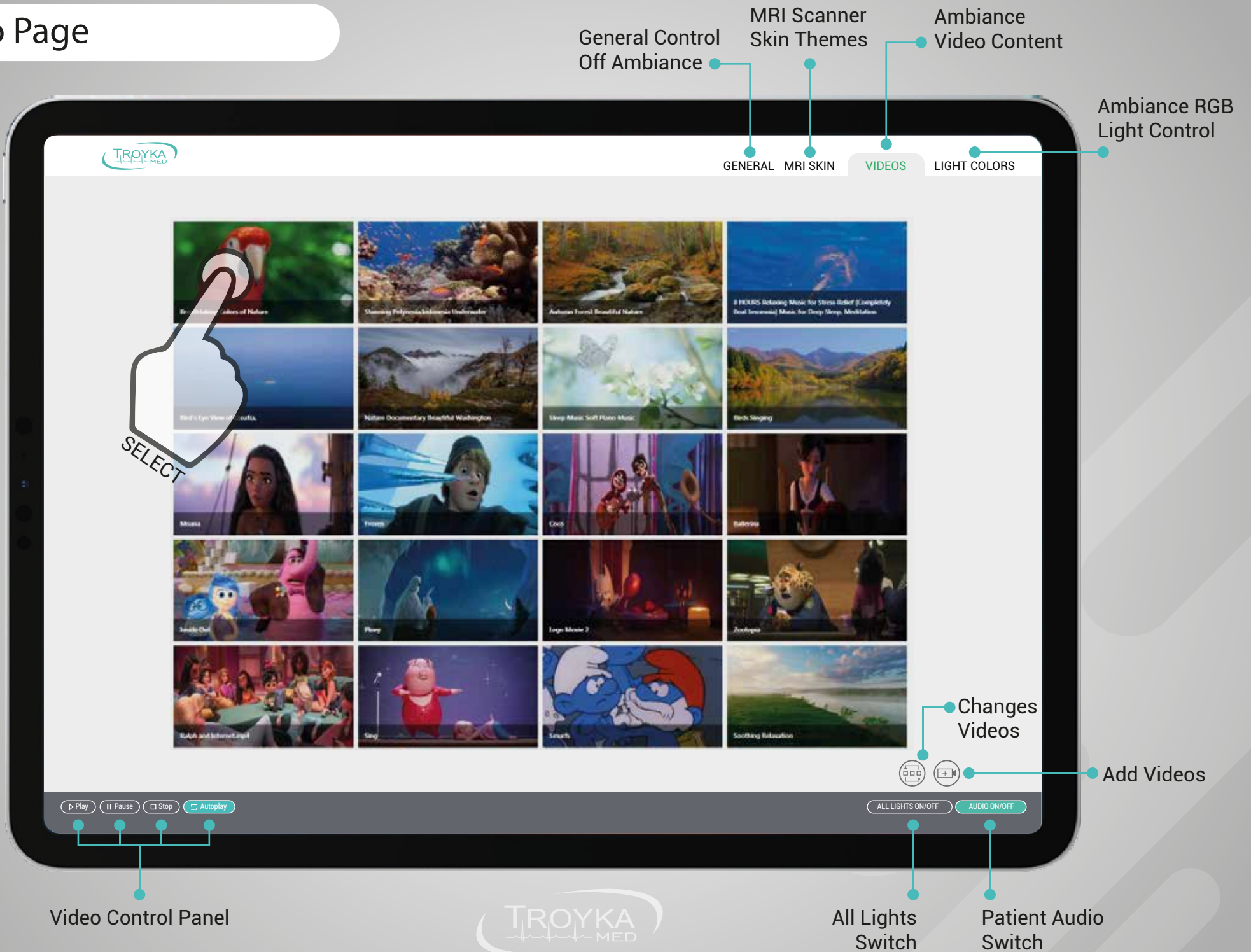
Real-time streaming of patient experience content

MRI Skin Projection

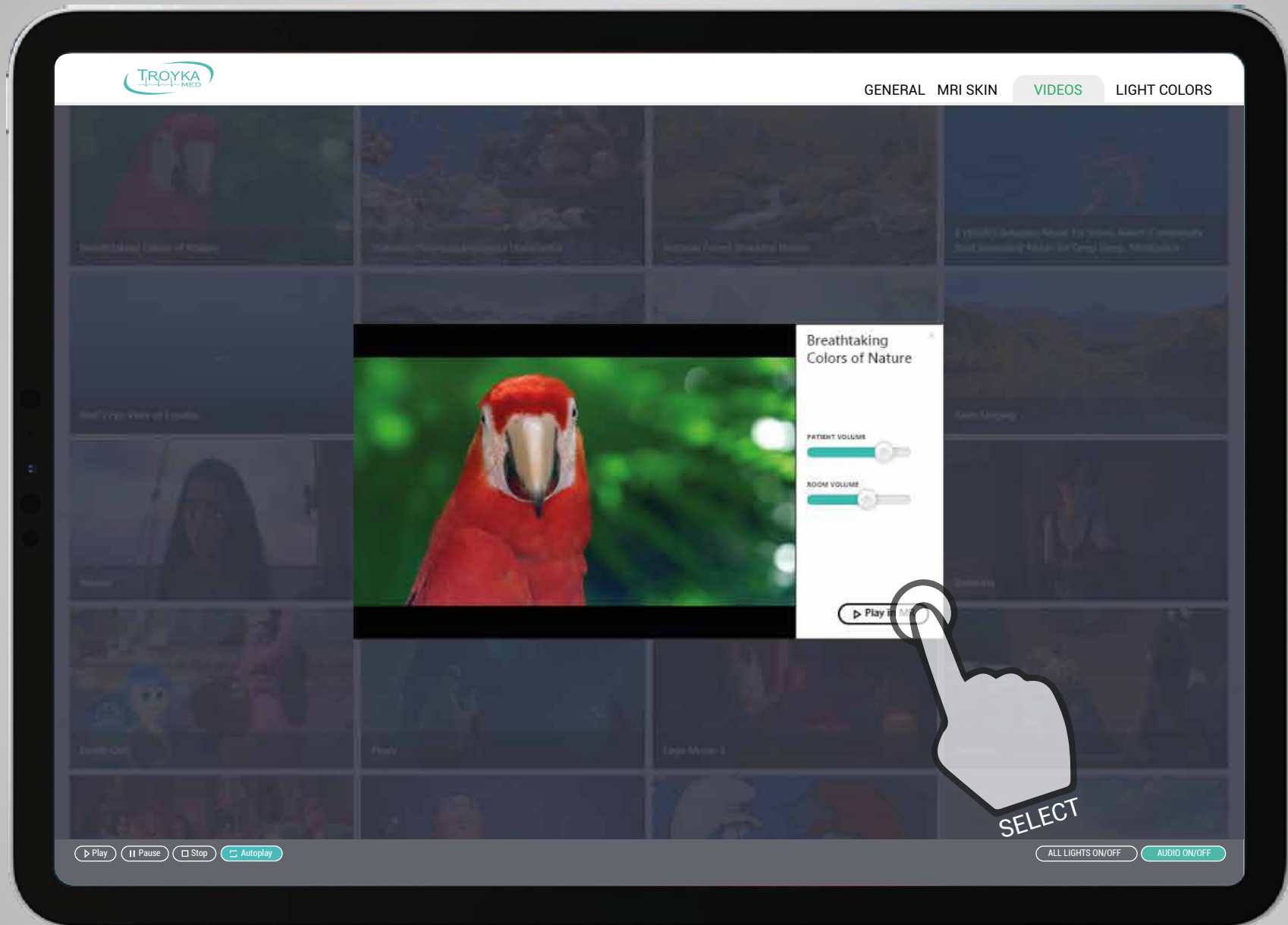
- Spatial projection software turns MRI scanner into a display surface.
- Three-dimensional MRI scanner is spatially mapped on the virtual program which mimics the real environment it is to be projected on.
- The software interacts with the projector to fit any desired image onto the surface of the MRI scanner.
- The video is combined with audio to create an audio-visual ambiance.
- The spatial mapping software masks the MRI scanner bore not to disturb patient by projector light during the scan.



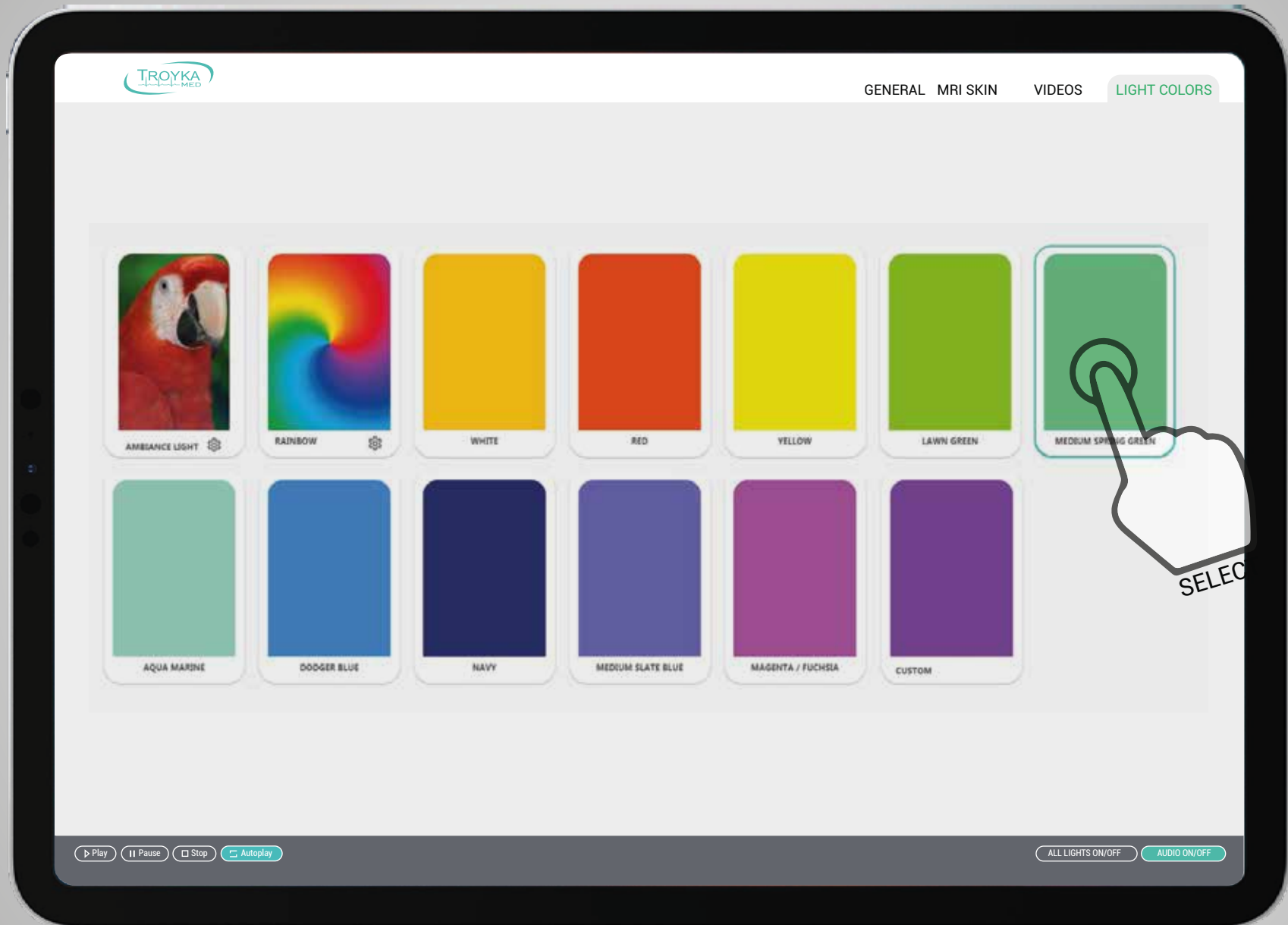
Video Page



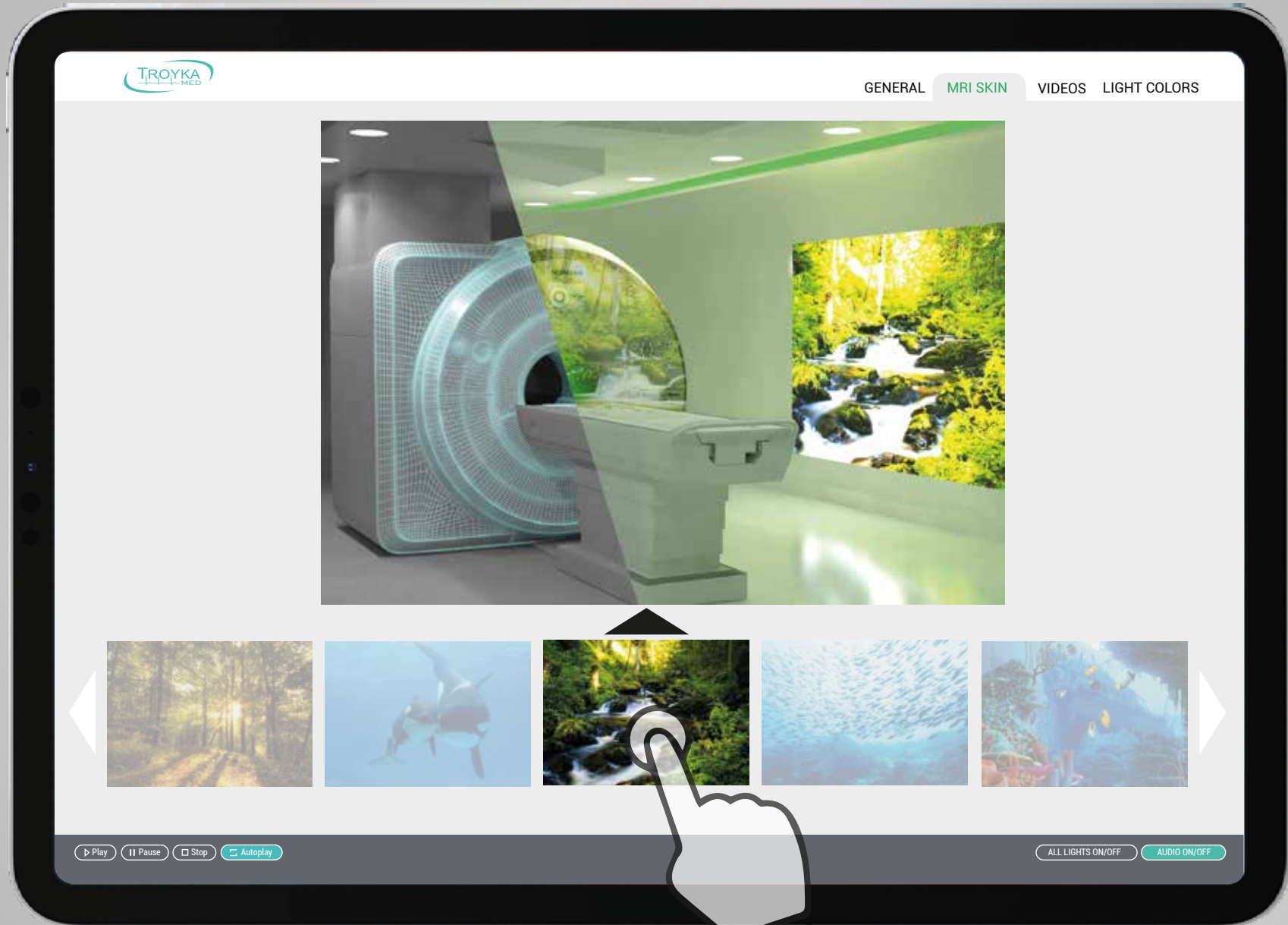
Video Player Page



Light Control Page



MRI Skin Control Page





İOSB Has Emek Sanayi Sitesi, 2284 sokak, No: 48,
Ostim - ANKARA - TURKEY

P: +90 312 265 00 96

F: +90 312 265 00 96

E: info@troykamed.com

www.troykamed.com